

State of Wyoming Corner Record

(In compliance with the *CORNER PERPETUATION AND FILING ACT*, Wyoming Statutes, 1997, Section 33-29-140, et seq., and the Rules and Regulations of the Board of Registration for Professional Engineers and Professional Land Surveyors)

Reverse side of this form may be used if more space is needed.

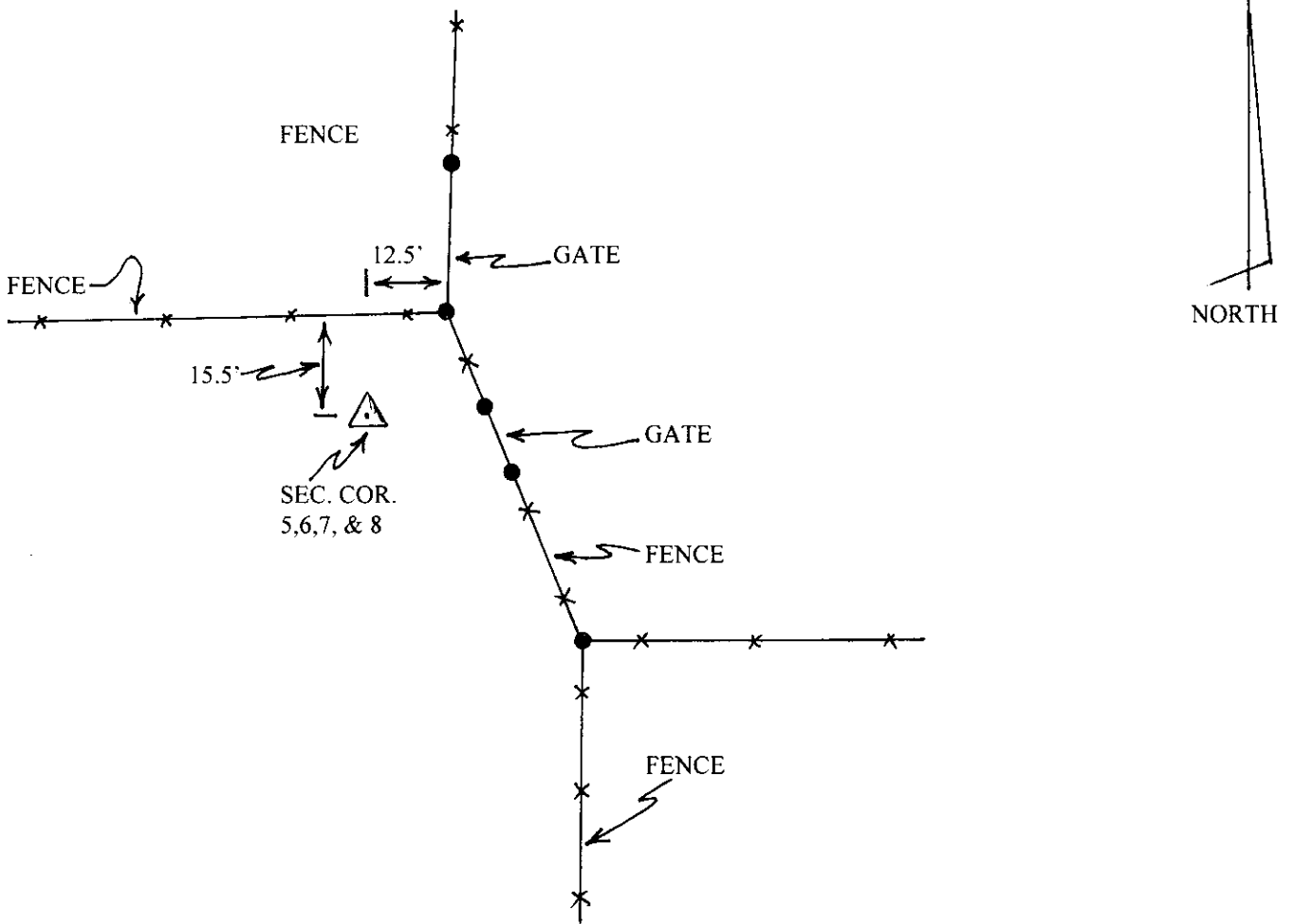
Record of original survey and citation of source of historical information (if corner is lost or obliterated). Description of corner monumentation evidence found and/or monument and accessories established to perpetuate the location of this corner. Sketch of relative location of monument, accessories, and reference points with course and distance to adjacent corner(s) (if determined in this survey). Method and rationale for reestablishment of lost or obliterated corner.

The General Land Office Survey for the interior subdivision of Township 12 North, Range 65 West, 6th P.M. completed by E.D. Bright under contract dated Aug. 10, 1868, survey completed Nov. 28, 1868, and approved by the Colorado Surveyor General on Jan. 25, 1875; presently recorded in the office of the U.S. Bureau of Land Management, Wyoming.

RECORD: Section Corner for Sections 5, 6, 7, and 8 (Vol.59 1876, Pg.184): "Set conglomerate stone 22 x 18 x 9 for cor. To secs. 5,6,7,8."

NOT FOUND: SEE - SURVEYOR'S REPORT on following page.

SET: 3" diameter aluminum survey cap on a 3' long No.5 rebar, properly stamped in accordance with the BLM Manual. See RECORD OF SURVEY recorded in the Laramie County Clerk's Office under Reception No. 616226, Bk. 2338, Pg. 133



Date of Field Work: APRIL 2013

Office Reference: _____

CROSS INDEX DIAGRAM

1	2	3	4	5	6	7	8	9	10	11	12	13	14	15	16	17	18	19	20	21	22	23	24	25	
A																									A
B	6	5	4	3	2	1																			B
C																									C
D																									D
E																									E
F																									F
G	7	8	9	10	11	12																			G
H																									H
J																									J
K																									K
L	18	17	16	15	14	13																			L
M																									M
N																									N
O																									O
P	19	20	21	22	23	24																			P
Q																									Q
R																									R
S																									S
T	30	29	28	27	26	25																			T
U																									U
V																									V
W																									W
X	31	32	33	34	35	36																			X
Y																									Y
Z																									Z

Land Surveyor / Firm / Address

John J. Studley, LS No. 4828

Studley Land Surveying, PC

615 West Dale Blvd.

Chevenne, Wyoming 82009

Telephone: **307-287-4755**

This corner record was prepared by me or under my direction and supervision.
SEAL & SIGNATURE



Corner Name: Section corner common to Sections: 5,6,7, & 8 T 12 N , R 65 W : 6th P.M. Cross-Index No.: E 5
SBRPEPLS/PLSW: March 1994: PLSW January 1998

RECORDED 5/24/2013 AT 2:02 PM REC# 616230 JK# 2338 PG# 1337
DEBRA K. LATHROP, CLERK OF LARAMIE COUNTY, WY PAGE 1 OF 2

SURVEYOR'S REPORT

The original GLO stone monument was not found. There are fences coming into the area of this corner from each of the cardinal directions, providing a general location for the corner. However, they do not line up directly with one another in a manner usable as evidence of a precise location for the corner. An original GLO stone monument was found for the quarter corner common to Sections 5 and 8, located to the east; and an original GLO stone monument was found for the quarter corner common to Sections 6 and 7, located to the west. I also found the original GLO stone monument for the Section corner common to Sections 7, 8, 17, and 18 located one mile south of this position. The intervening quarter corner was not found. And I did not find the original GLO stone for the quarter corner to the north, or the original closing corner of the Third Standard Parallel for Sections 5 and 6.

Since I did not have an "Existent" original GLO corner to use to the north, I did not think it appropriate to use the double proportionate measure procedure for reestablishing this corner position. Instead I used the single proportionate measure procedure between the two found quarter corners (E3 and E7) to establish a temporary point.

This temporary position measured 5,314.40' from the Section corner (J5) to the south, 34.4' long. I make note here that the reestablished position for the quarter corner to the north (C5) measures 2,657.31', being 17.3' long from this temporary point. Each of these measured distances is long by a factor of 1.0065, indicating a consistently long measurement for the record GLO distances on this line. Also, the quarter corner to the north (C5) is reestablished using record survey ties to the position of the original stone which is not presently found, see the SURVEYOR'S REPORT for that Corner Recordation Form being filed simultaneously with this report. This is consistent evidence of the latitudinal location of the original corner position.

Also, the found quarter corner stone common to Sections 6 and 7 (E3) is located 15' +/- south of a east-west fenceline very similar to this temporary corner point. And the found quarter corner stone common to Sections 5 and 8 (E7) is located 38' +/- north of a east-west fenceline very similar to this reestablished corner point. Indicating to me that the east-west fencelines are consistently providing general evidence of the latitudinal location of the original corner position as being very close to this temporary point.

CONCLUSION: The single proportionate measurement between the two found GLO stone monuments for E3 and E7 provide good longitudinal evidence for the original position of this corner beyond reasonable doubt; and the consistently long measurements to C5 and J5 provide good latitudinal evidence for the original position of this corner, also supported by the similar positioning of the east-west fences to both the east and west. Therefore, the temporary point established for this obliterated corner by single proportionate measurement between E3 and E7 is in my professional opinion supported by the collateral evidence described above to best reestablish the original position of the corner beyond reasonable doubt.

